



MTDay.nl



T I N S

# Content



Content	<b>02</b>
Why tin?	<b>03</b>
Why MTD Tins?	<b>04</b>
How does it work?	<b>05</b>
Impression of our tins	
Round tins	<b>06</b>
Square and rectangular tins	<b>08</b>
Other tin shapes	<b>10</b>
Your own tin shape	<b>12</b>
Afwerking, refining and closure	<b>14</b>
Tins insmall quantities	<b>15</b>

# Why **tin**?



- › Tin is a clean, safe but also attractive way of packaging.
- › Tins last a long time, are considered more than just 'packaging'. Tin is not a disposable item, better to reuse, and often also provided with beautiful design, which gives the tin an emotional value and is preserved.
- › Re-use of tin leads to longer brand exposure, which in turn can result in a positive influence on brand choice.
- › Tin gives your product a 'premium' look and protects the content.
- › Tin is 'flexible', in other words very creative to use and design into a striking shape, with a mainly sustainable, but also authentic or nostalgic look.
- › Tin is more environmental friendly than all other packaging. It is not made from fossil fuels, and it is more recyclable.
- › Our tins are certified, which means that in addition to being environmental friendly, they are also (food) safe.

**Tin products  
have the highest  
recycling percentage**





© Mercis bv



# Why MTD Tins?



## Own studio

Our own creative studio can think along with you about the design and lay out of the can. By using the studio, the entire production process can be coordinated in such a way that everything fits together and waiting for other parties is avoided.

## Low minimum order quantity

The minimum order quantity for our tins is only 2.000 pieces, which is a small amount for the tin industry. An even smaller order unit applies for a number of basic tins!

## Customization

Custom made, bespoke tins are also possible. We are happy to look at your request and think along with you about the possibilities and the most ideal and most economical solution for your personal wishes.

## Fulfilment

Filling tins, developing POS material, displays or packaging in a special way: We can also support you in this area and take over actions, so that the entire process can remain in one hand.

We take your view from concept to design, and from production to delivery.

## Quality

Quality is what we stand for. This quality is demanded every day by our customers. The list with strict quality requirements of various museums, licensors (such as Mercis' Miffy) but also of the large food and drink producers are also the standard for us that we always want and can meet.

## Clients

By contributing solution-oriented thinking and acting proactively, we can proudly count among our clients:

- › The most beautiful museums but also cultural institutions in the Netherlands such as the Van Gogh Museum, Rijksmuseum, Mauritshuis and the Rembrandt House, but also TATE Modern in London, or the Detroit Institute of Art.
- › Sports organizations such as AFC Ajax, Feyenoord, PSV and FC Utrecht, but also internationally, such as the Maltese National football team: Malta Football Association.
- › Zoos and nature/theme parks such as Artis, Burgers'Zoo, Ouweland Dierenpark and Walibi Holland, but also Huis ten Bosch in Japan or the Blue Lagoon in Iceland.
- › Leading companies for which we have designed and produced custom tins, such as Heineken brewery, Van der Valk Hotels and Reypenaer.

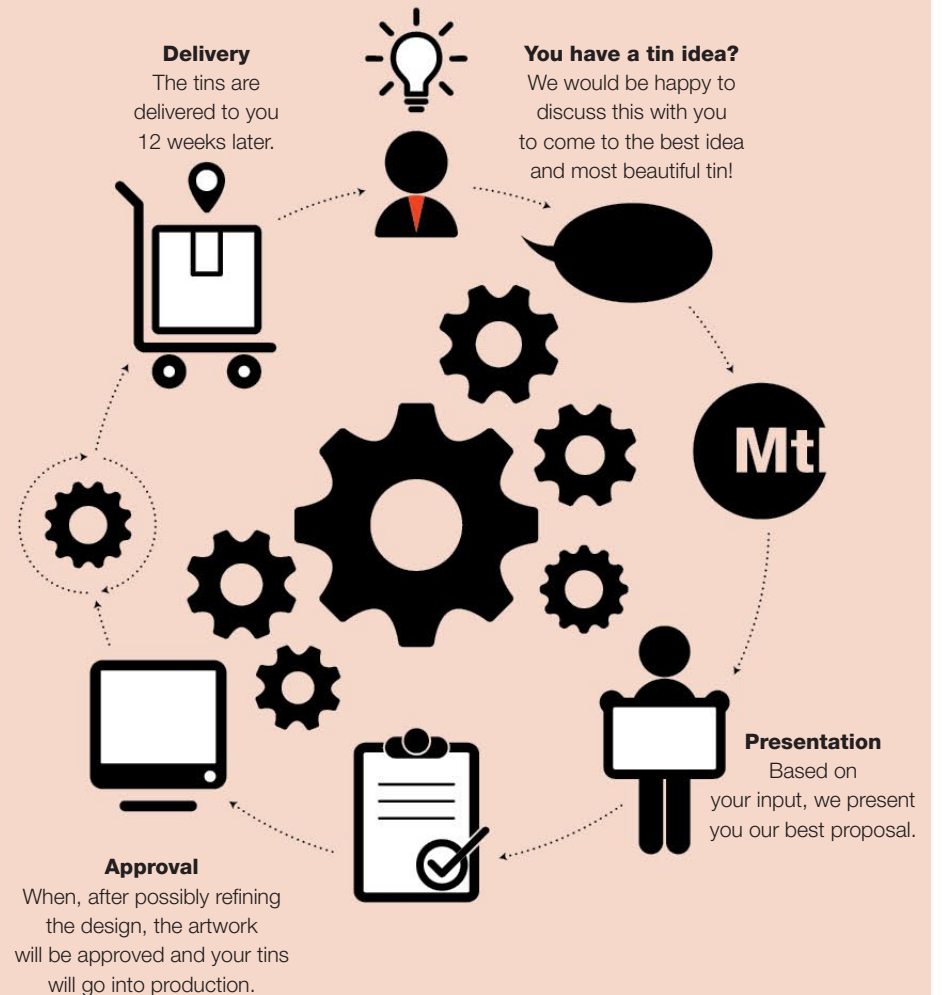
# How does it work?



- > You are looking for a tin, or are you looking for a beautiful (premium-) original but also sustainable packaging for your product.
- > Once you have found your way to MTD Tins, we will discuss your ideas and wishes together.
- > Based on your input, we will work creatively to find the most suitable solution for your request. As soon as we have these in mind, we will work them out for you into a beautiful and complete proposal.
- > We will present you a suitable proposal, including a realistic impression of the tin. When the tin meets your requirements, so after any coordination, the artwork will be prepared for printing.
- > A digital proof of the production file and an impression of the final model will follow by email for your approval.
- > Then -after your approval- the tin is taken into production. Do you want a completely new tin model? A mold will be made for this first. You will first receive a prototype of this before production starts. The production time of the tins is approximately 8 weeks.
- > Finally, normally after 12 weeks, the tins are delivered to you, according to agreement.

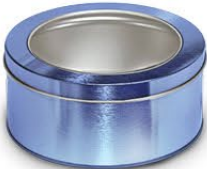


## the Process





# Round tins



“

On the following pages you will find an impression of the different shapes of tins that have already been produced or presented. Tins in all shapes, sizes, with various closures and suitable for all kinds of different uses and contents.

We are happy to personally discuss your wishes and questions with you and work from there to a suitable proposal.

Blikjes met oud Hollands snoepgoed | Tins filled with typical Dutch candy

Het Melkmeisje The Milkmaid	Nachtwaacht Night Watch	Silfven met bloemen Old Life with flowers
		
Boterwafeljes Butter waffle candies (10g)	Kaneelbuisje Cinnamon pillow (80g)	Ranbessen Raspberry candies (10g)

**RIJKS MUSEUM**





“

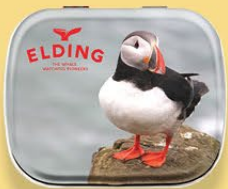
A common tin model is the square or rectangular tin: From 3,0 x 2,0 to 32,0 x 25,0 cm. varying in height. In between, every imaginable size of tin is possible to make...!

We have collected an impression of a number of previously made square and rectangular tins on 2 pages:

# Square and rectangular tin









# Other tin shapes



“

In addition to the previous shown examples, we can also supply many other metal products. A few examples:

- Serving trays (in various sizes)
- Metal-posters/ metal signs
- Metal (post-)cards
- Lunchboxes
- Suitcases (in various sizes)
- Money boxes (various models)
- Teabox
- Filmtin
- Window tins (various models)
- Dispenser tins
- Round spice tin with spreader
- Carousel
- Christmas ornament or other spherical tins
- Tea light
- Oval tin
- Heart shaped tin
- Triangular tin
- Hexagonal tin
- Octagonal tin
- Flower shaped tin
- Book shaped tin
- Foam-filled tin





# Your own tin shape



In addition to the standard tin shapes, it is also possible to produce tins in special shapes: Completely customized based on your product or your special wishes. Below an impression of a number of examples.

As soon as this model has been approved by you, after any adjustments, the production of the tins will be started. After 12 weeks, the tins are ready!

Do you want your own tin shape? Based on a sketch, a prototype can be tailor-made for you. Based on this prototype, you can assess whether the model fully meets your expectations.



# Finishing refining & closure



The basic colors of our tins are shown left: Silver, champagne and gold. Both the inside and the outside of the tin (and lid) can be printed. Silver, champagne or gold-coloured metal is therefore visible on the unprinted tin.

Not sure where to start? Hopefully the overview below of options in terms of finishing, refining and closure will help you on your way!

## Finishing



glossy



matte



spot varnis h



metallic

## Refining



embossing/ debossing



3D embossed



with window



stackable

## Closure



sliding lid



screw lid



hinged lid



clip closure

# Small quantities

## with basic tins



We now also offer you the unique possibility to order tins in small quantities. We have developed a number of widely applicable basic tins especially for this, which can be personalized for you from 50 pieces.

With the exception of the biscuit tin, all models are suitable for letterbox mail.



**Heart tin**

10,0 x 9,5 x 2,8 cm.



**A6 tin**

15,8 x 11,6 x 2,6 cm.



**Rectangular tin**

14,0 x 8,6 x 4,5 cm.



**Pocket tin**

10,0 x 6,3 x 2,0 cm.



**Mintbox/ Minitin**

6,4 x 4,4 x 1,8 cm.

# Mintboxes • Miniboxes



Our mint tins come standard with 14 grams of sugar-free fresh mini-mints. These mini-boxes can also be delivered for your own content (without fresh mints text on the bottom).

Would you like your logo, photo or idea on a tin? We are happy to help with a design! The tins are available quickly, in small quantities and possibly with a display for 24 tins.



<p><b>Minimints sugarfree (14 g) ©</b>                  Sugarfree sweetened with sweetener</p> <p><b>Ingrediënten:</b> sweeteners: sorbitol, sucralose, Flavour, peppermint oil.                  Anti-caking agent: magnesium-lactate.</p> <p><b>Nutrition values (g/100 g):</b>                  Energy: 182 kJ (236 kcal); protein 0.3g, carbohydrate 97.8g, of which polysaccharides 97.8g, of which sugars 0g, starch 0g, of which saturated 0g, fibres 0g, sodium 0g</p> <p>Excessive consumption may have a laxative effect. Store in a cool dry place. Contains a source of phenylalanine.</p> <p> Made in Holland</p>	<p><b>Minimints suikervrij (14 g) ©</b>                  Suikervrij gezoet met zoetstoffen</p> <p><b>Ingrediënten:</b> zoetstoffen: sorbitol, sucralose, Aromas: peppermintolie, Antiklontermiddel: magnesiumlactaat.</p> <p><b>Chemische voedingswaarde (g/100g):</b> Energie: 182 kJ (236 kcal), eiwit 0,3g, koolhydraten 97,8g; waarvan polyden 97,8g; waarvan suiker 0g, vet 0g; waarvan verzadigd 0g, vezels 0g, natrium 0g</p> <p>Overmatig gebruiken kan laxerend werken. Houd er op toe te zien. Bevat een bron van fenylalanine.</p>
--	---

Available in these basic colours:



514393 black    514394 white    514395 gold    514396 silver



display:  
14,0 x 21,0 x 6,0 cm.

# Pocket Tins



514677 black    5146778 white    514679 gold    514680 silver



for your own content  
**unfilled**



with 45 gr. sweethearts  
**filled**



# Pocket T-inspiration



## preservable

candy, healthy snacks  
such as nuts or raisins,  
pills, medicines, plaster sets,  
cosmetics, mini tubes or bottles



## take along

sewing- / manicure- / tire repair  
set, earplugs, earbuds, rubber bands  
travel games, matches, keys, change,  
stamps, receipts, rain cape



## beauty & care

jewelry, hairpins, hairbands & -clips  
make-up, cream, lip balm,  
sunblock, mouth mask, handkerchiefs,  
tissues, shaving set, lens case



## hobby

buttons, pins, haberdashery  
sewing kit, small tools, screws,  
beads, shell collection,  
stones, stamps



*Available  
with display  
for 24 tins*



display: 21,5 x 27,5 x 7,0 cm.

# Heart tins



The most lovable tins for beautiful memories, precious keepsakes, valuable souvenirs, and sweet treats! The hearts are available in silver and gold.



Available in these basic colours:



514508  
gold



514509  
silver



514513  
white

# A6-tins



514900  
silver

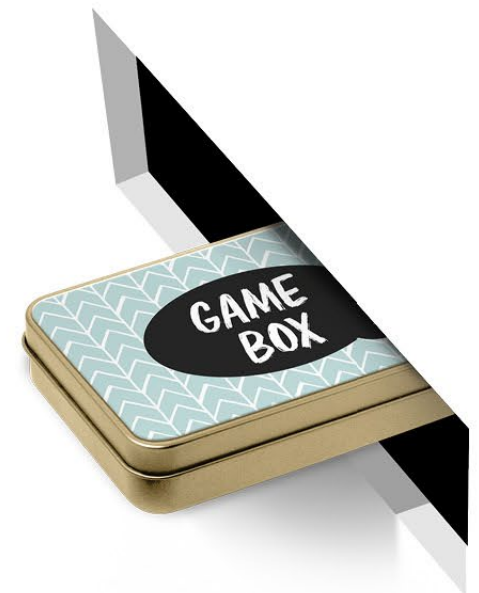
514901  
gold

514902  
white

514903  
black



Due to its very useful size, this basic tin is very suitable as 'premium' packaging, but also for stationery, (postal-) cards, games or luxury mailing tins.



# Rectangular tins



These storage tins for, for example, cookies or candy are available in 3 basic colors silver, gold and white.



514512  
white



514510  
silver



514511  
gold



T I N S



Contact :

Flevolaan 14  
1382 JZ Weesp

+31(0)294 414 491

info@mtday.nl